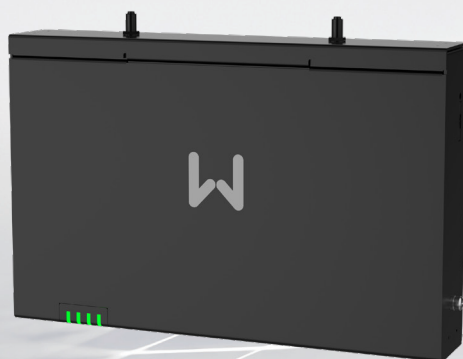


**GOODWE**



# **Quick Installation Guide**

## **Smart DataLogger**

(EzLogger3000C)

V1.0-2023-09-30

## General Disclaimer

- The information in this guide is subject to change due to product updates or other reasons. This guide cannot replace the product labels or the safety precautions in the user manual unless otherwise specified. All descriptions here are for guidance only.
- Before installations, read through the quick installation guide. For additional information, please see the user manual.
- All operations should be performed by trained and knowledgeable technicians who are familiar with local standards and safety regulations.
- Check the deliverables for correct model, complete contents, and intact appearance. Contact after sales service if any damage is found or any component is missing.
- Strictly follow the installation, operation, and configuration instructions in this document. The manufacturer shall not be liable for equipment damage or personal injury if you do not follow the instructions. For more warrant information, please visit:<https://en.goodwe.com/warranty>.

## Safety Disclaimer



### WARNING


- Before wiring, disconnect all upstream switches to ensure the equipment is not powered on.
- Plug or unplug the power adaptor properly to avoid electrical risks.
- Use appropriate tools for proper installation, maintenance, etc.
- Operate the equipment in compliance with local standards and safety regulations.
- Unauthorized disassembly or modification may cause damage to the equipment, which is not covered within the warranty scope.
- All labels and warning marks must be clear and distinct after the installation. Do not block, alter, or damage any label.
- Warning labels on the equipment are as follows.

	HIGH VOLTAGE HAZARD Power off the equipment before any operations.		Potential risks exist. Wear proper PPE before any operations.
	Read through the document before any operations.		Do not dispose of the inverter as household waste. Discard the product in compliance with local laws and regulations, or send it back to the manufacturer.
	CE mark		RCM mark
	TELEC mark	-	-

## Check Before Power ON

No.	Check Item
1	The product is firmly installed at a clean place that is easy to operate.
2	The power cable, ethernet cable, and communication cables are connected correctly and securely.
3	Cable ties are intact, routed properly and evenly.
4	The input signal status are correct and the input power parameters are within the operating scope of the equipment.

## Cable Specification

No.	Cable	Silkscreen	Cable Specification
1	PE cable		<ul style="list-style-type: none"><li>Outdoor copper cable</li><li>Conductor cross-sectional area: 2.5mm<sup>2</sup>-4mm<sup>2</sup> (14AWG-12AWG)</li></ul>
2	DC output cable (12V/24V)	DC OUT / 12V GND	<ul style="list-style-type: none"><li>Outdoor copper cable</li><li>Conductor cross-sectional area: 0.2mm<sup>2</sup>-1.5mm<sup>2</sup> (24AWG-16AWG)</li></ul>
3	DO signal cable	DO 1-2	
4	RS485 communication cable	RS485 1-4	
5	DI signal cable	DI 1-4	
6	AI signal cable	AI_0-12V AI_0/4-20mA	
7	PT signal cable	PT100/PT1000	
8	Ethernet cable	ETH 1-2	<ul style="list-style-type: none"><li>CAT 5E or higher specifications</li><li>Shielded RJ45 connectors</li></ul>

## Indicators

Indicators	Indicator Status	Explanation
PWR	Steady green	The device is powered on.
	Green off	Device power failure or abnormal power supply.
RUN	Slow blinking green	The device is working properly.
	Steady green/Green off	The device fails to work.
NET	Steady Green	Communication between the device and the server is normal.
	Slow blinking green	Communication between the device and the router fails.
	Fast blinking green	Communication between the device and the router is normal, but communication between the device and the server fails.
ALM	Red off	No alarm.
	Steady red	All the connected inverters are off grid.

## EU Declaration of Conformity

---

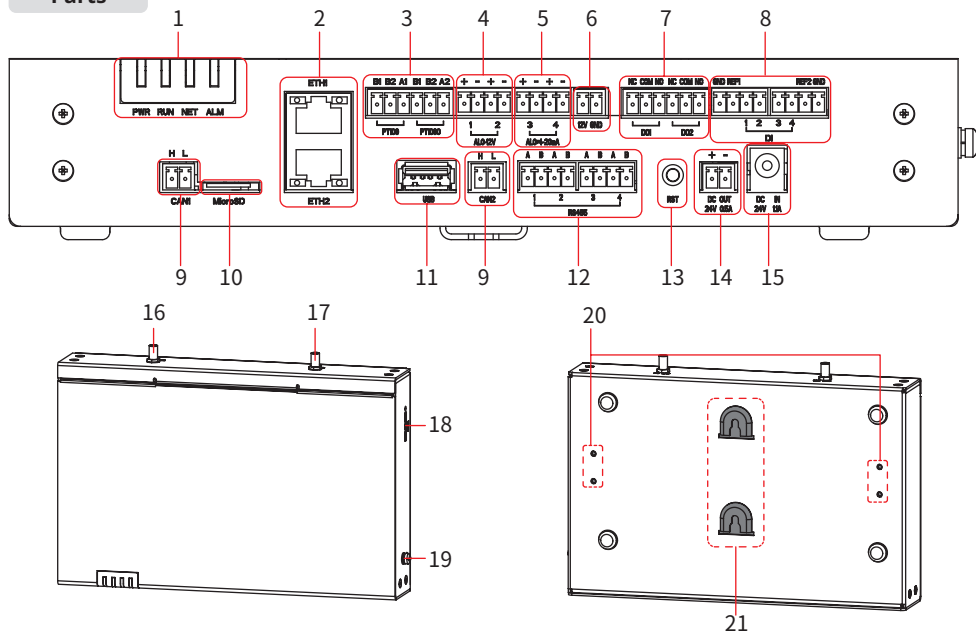
GoodWe Technologies Co., Ltd. hereby declares that the inverter with wireless communication modules sold in the European market meets the requirements of the following directives:

- Radio Equipment Directive 2014/53/EU (RED)
- Restrictions of Hazardous Substances Directive 2011/65/EU and (EU) 2015/863 (RoHS)
- Waste Electrical and Electronic Equipment 2012/19/EU
- Registration, Evaluation, Authorization and Restriction of Chemicals (EC) No 1907/2006 (REACH)

You can download the EU Declaration of Conformity on <https://en.goodwe.com>.

## 02 Product Introduction

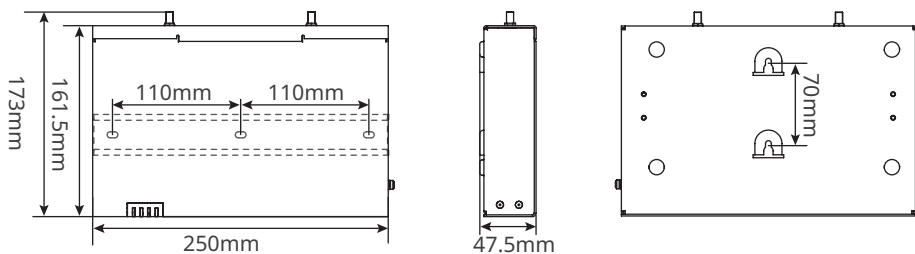
### Parts



- |                                  |   |  |
|----------------------------------|---|--|
| 1. Indicator                     | 2. Ethernet ports (ETH1/2)                            | 3. PT ports (PT100 PT1000)               |
| 4. AI ports (AI_0-12V)           | 5. AI ports (AI_0/4-20mA, reserved)                   | 6. 12V output power port (12V GND)       |
| 7. DO ports (DO1/2)              | 8. DI ports (DI)                                      | 9. CAN ports (CAN 1/2, reserved)         |
| 10. MicroSD card slot (MicroSD)  | 11. USB port (USB)                                    | 12. RS485 ports (RS485 1-4)              |
| 13. Reset button (RST)           | 14. DC output power port (DC OUT 24V 0.5A)            | 15. DC input power port (DC IN 24V 1.1A) |
| 16. WiFi antenna port (WiFi ANT) | 17. 4G antenna port (4G ANT, optional) <sup>[1]</sup> | 18. SIM card slot (SIM)                  |
| 19. Grounding point              | 20. Rail clamp mounting point                         | 21. Screw mounting slot                  |

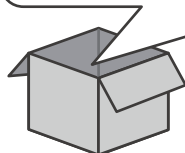
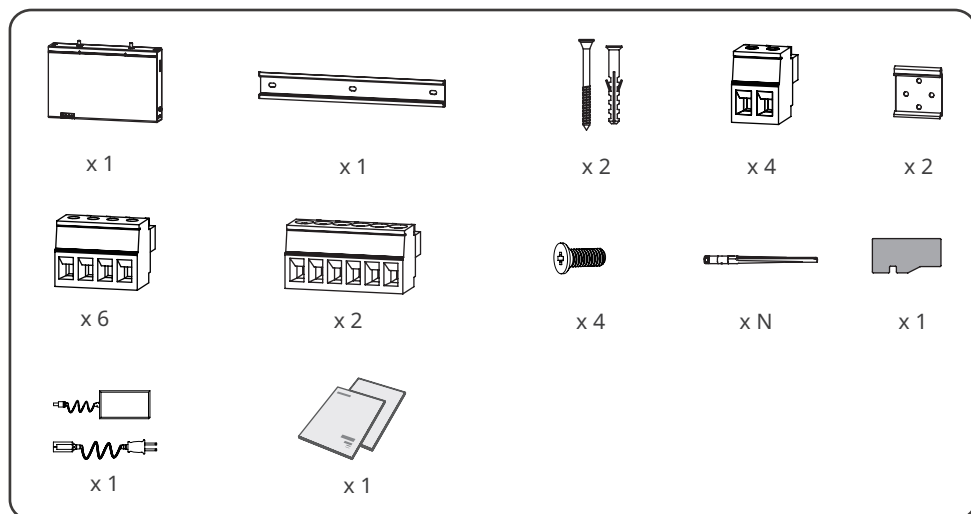
[1] 4G is available and optional in Europe and north America.

### Dimensions



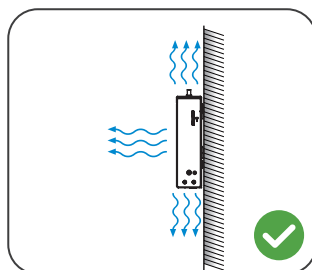
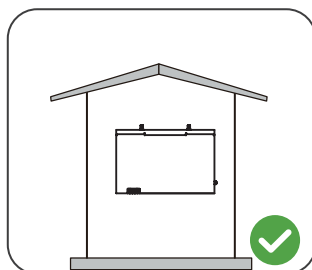
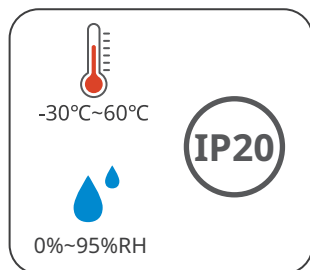
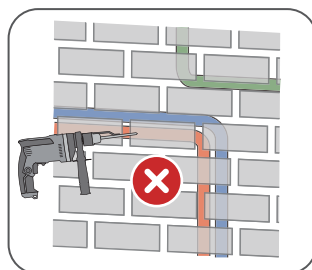
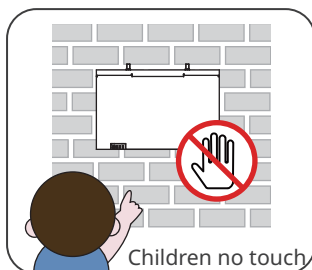
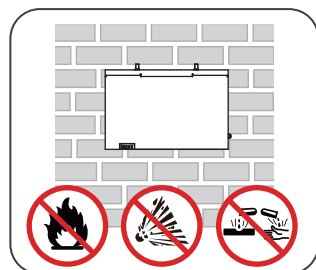
## 03 Installation

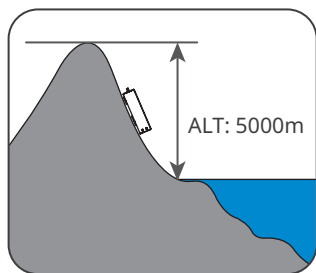
### Packing List



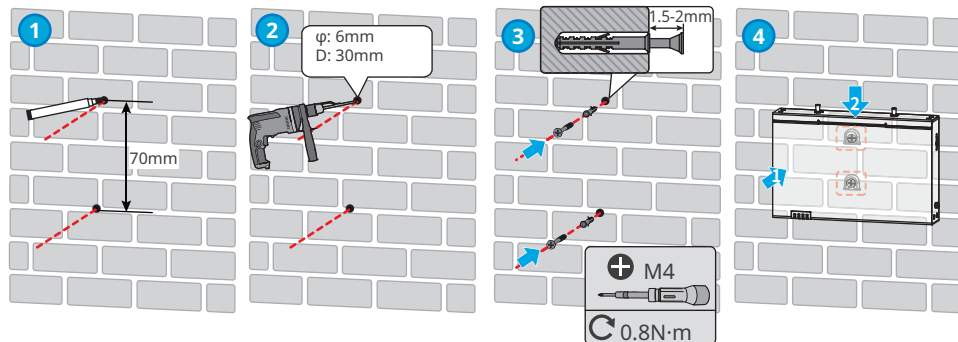
N=Quantity depends on the product model.

### Space Requirements

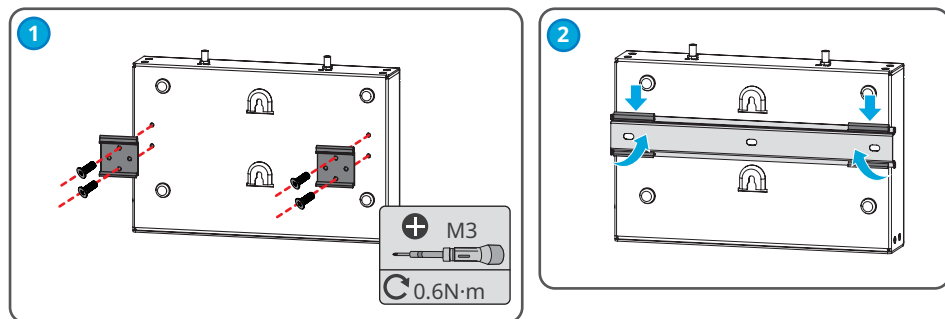




### Wall mounting



### Rail Mounting

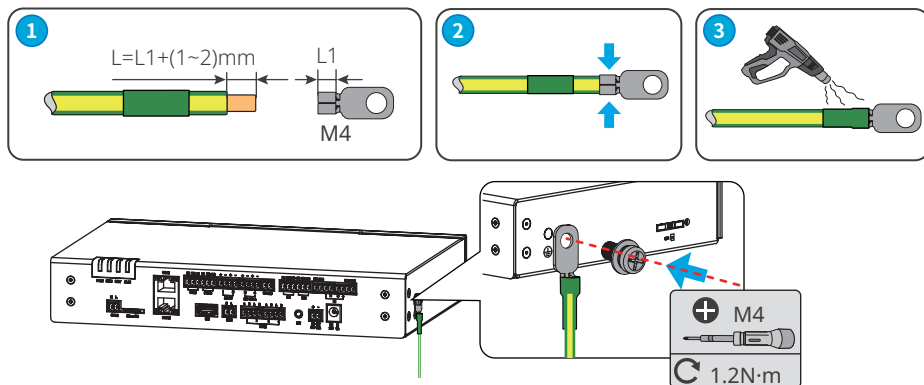


### Table Mounting

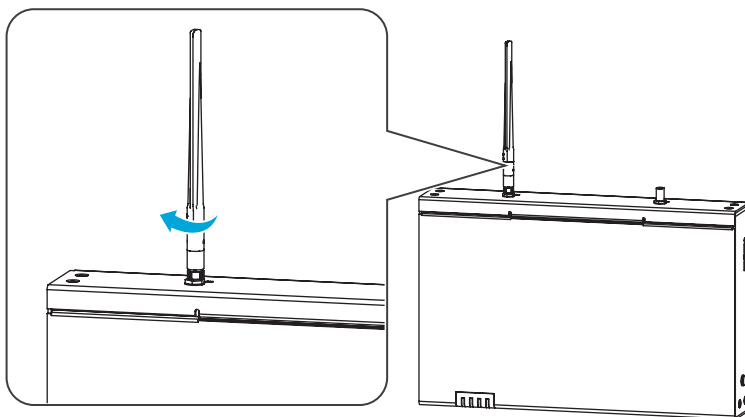
- Mount the device on a horizontal table. Place it properly to avoid the device slipping and causing damage.
- Do not place the device in a place where it can be easily touched to avoid signal interruption caused by accidental touching.

## 04 Electrical Connection

### PE cable

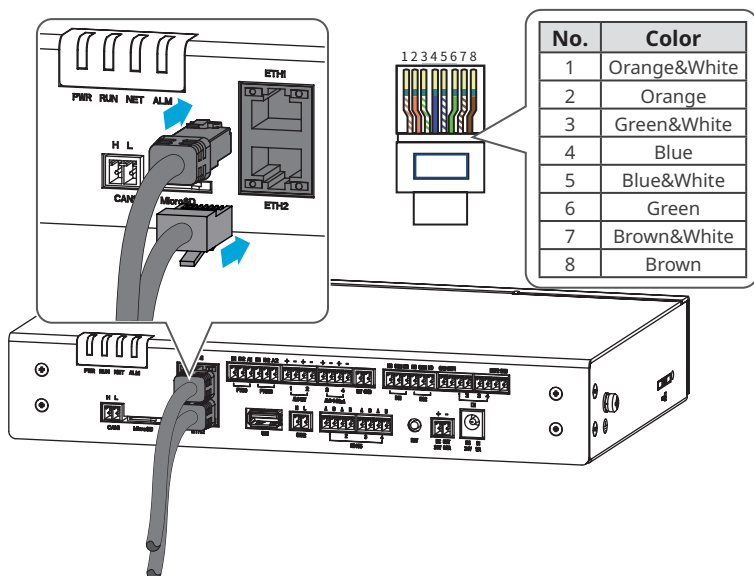


### Antenna

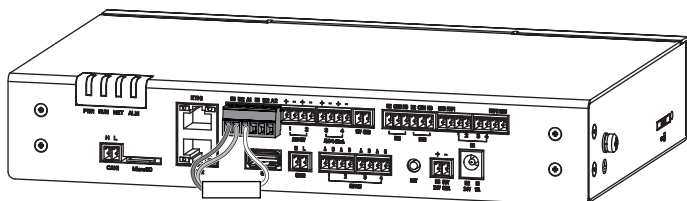




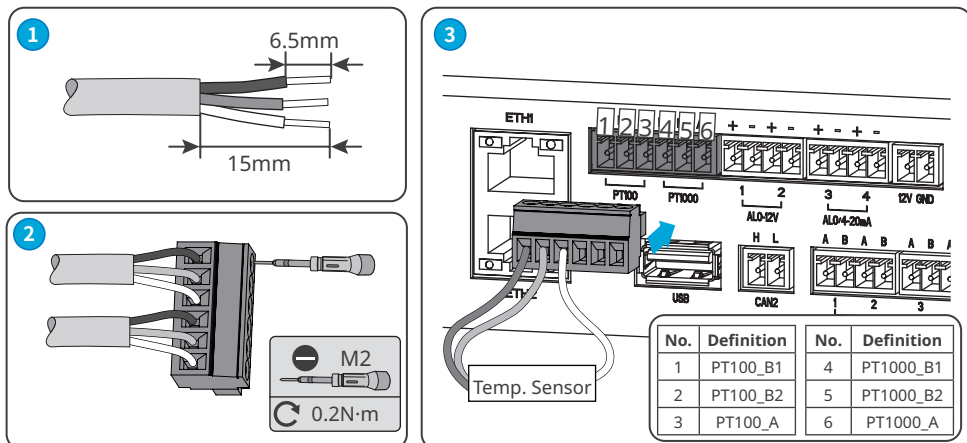
## Ethernet Cable



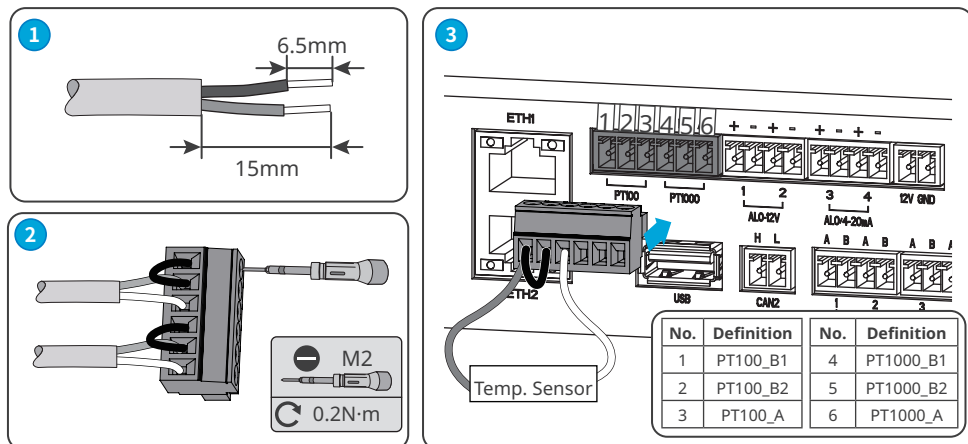
## PT Signal Cable



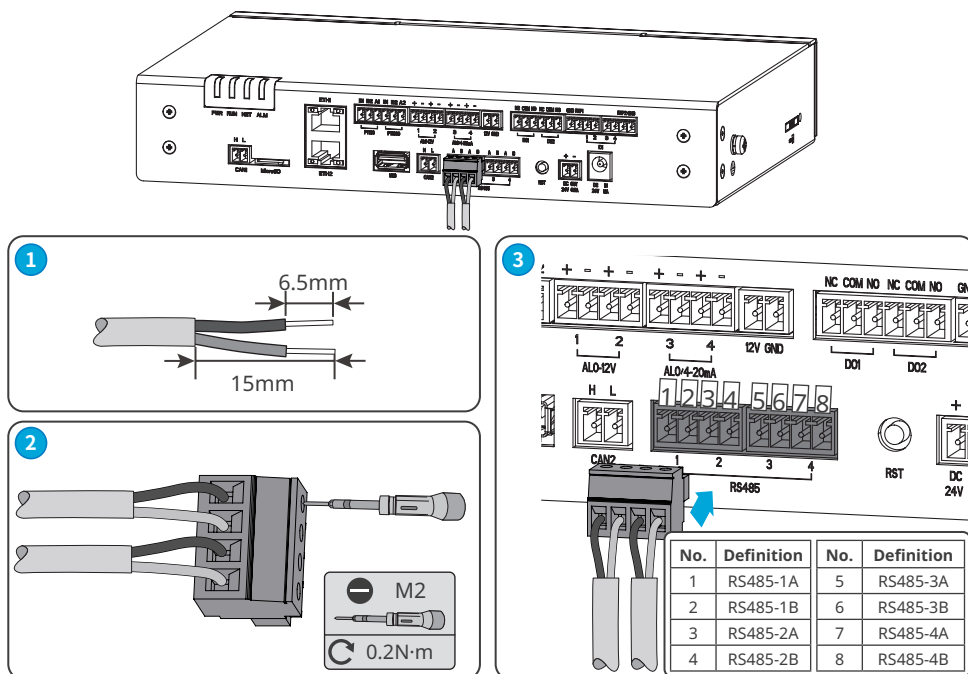
## Three wire PT100/PT1000



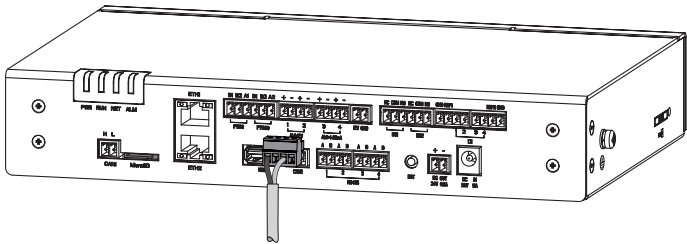
## Two wire PT100/PT1000



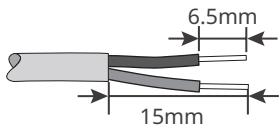
## RS485 Communication Cable



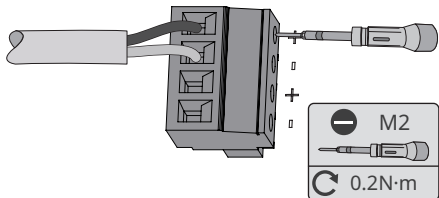
AI Signal Cable



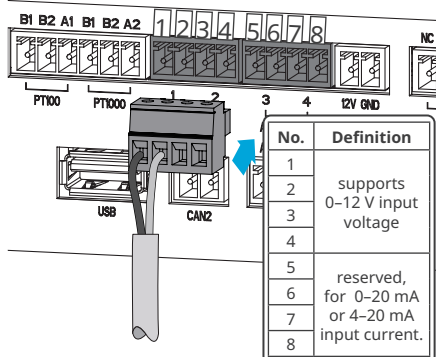
1



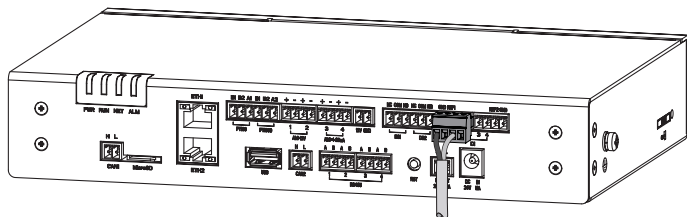
2



3

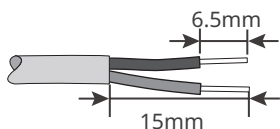


No.	Definition
1	
2	supports 0-12 V input voltage
3	
4	
5	reserved, for 0-20 mA or 4-20 mA input current.
6	
7	
8	

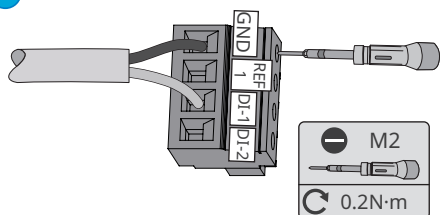


## Wet contact

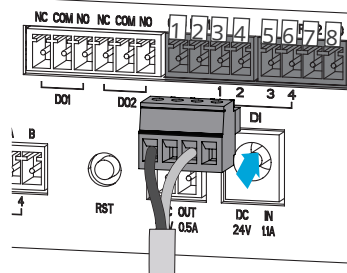
1



2



3

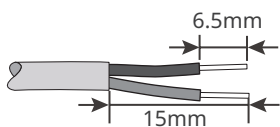


### Wet contact

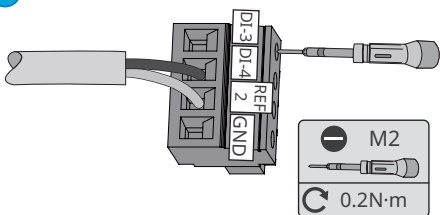
DI1	DI2	DI3	DI4
1: GND	1: GND	8: GND	8: GND
3: DI-1	4: DI-2	5: DI-3	6: DI-4

## Dry contact

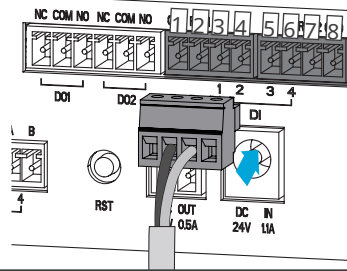
1



2



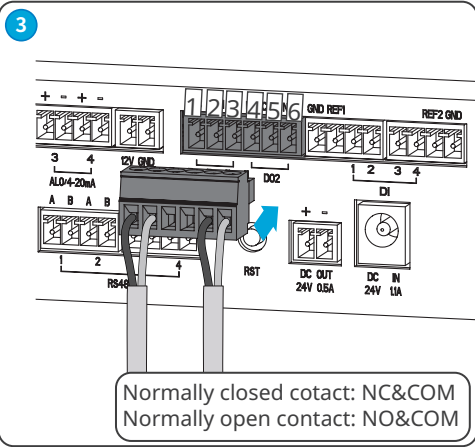
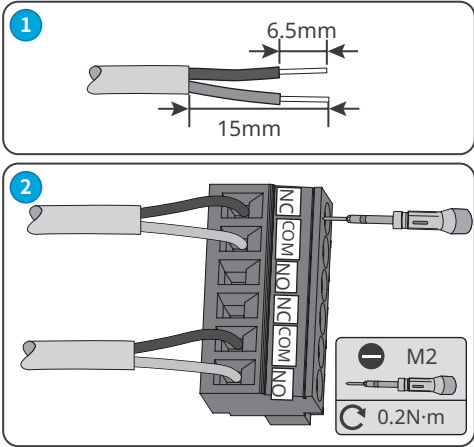
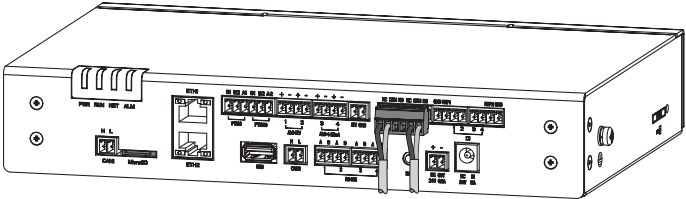
3



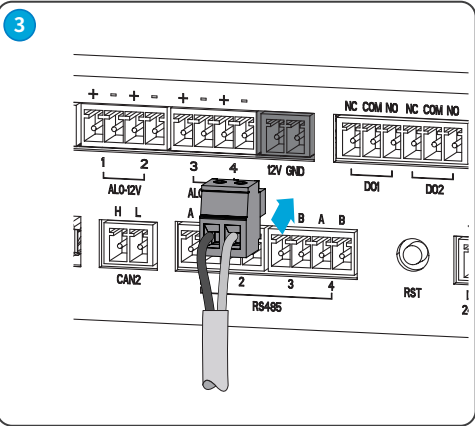
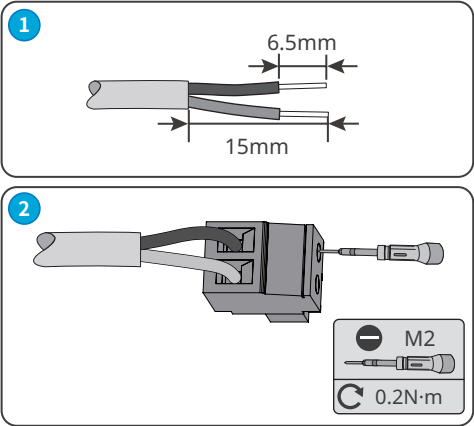
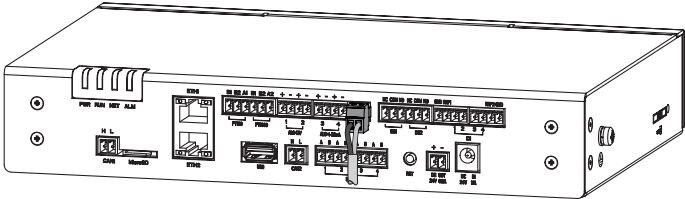
### Dry contact

DI1	DI2	DI3	DI4
2: REF1	2: REF1	7: REF2	7: REF2
3: DI-1	4: DI-2	5: DI-3	6: DI-4

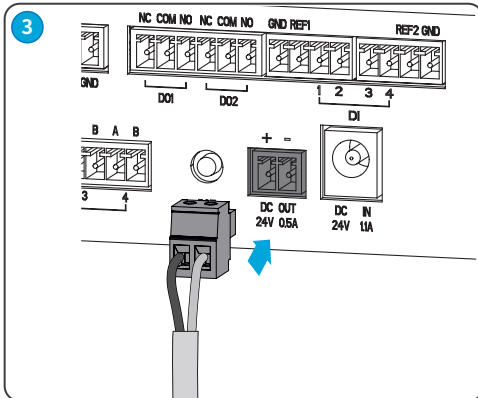
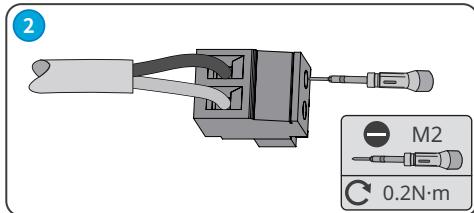
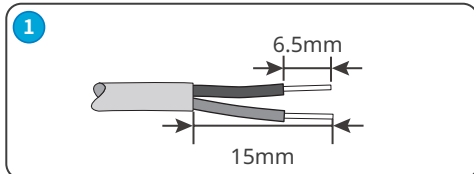
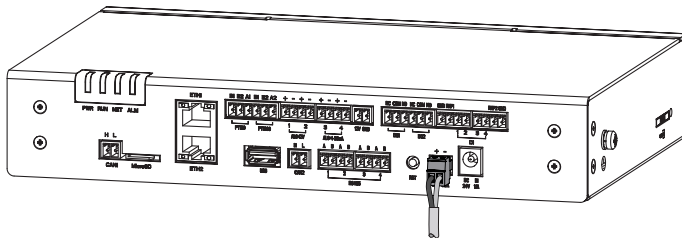
# DO Signal Cable



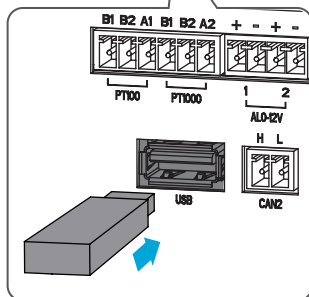
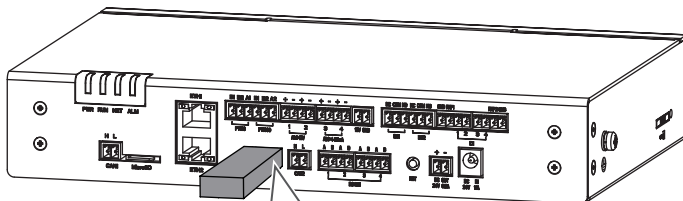
# 12V DC Output Cable



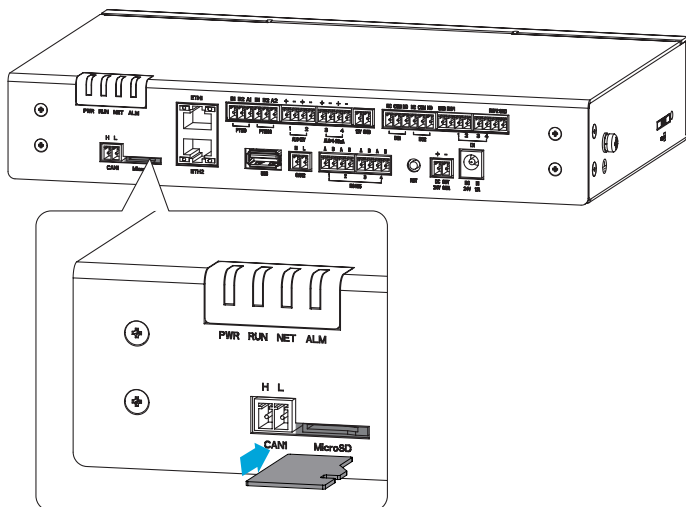
# 24V DC Output Cable



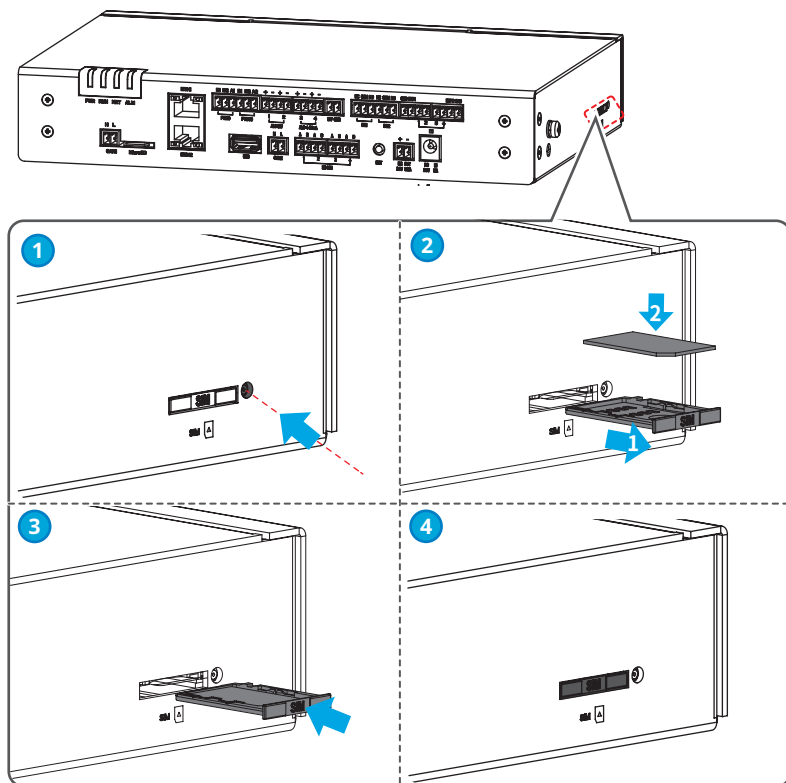
# USB Flash Drive



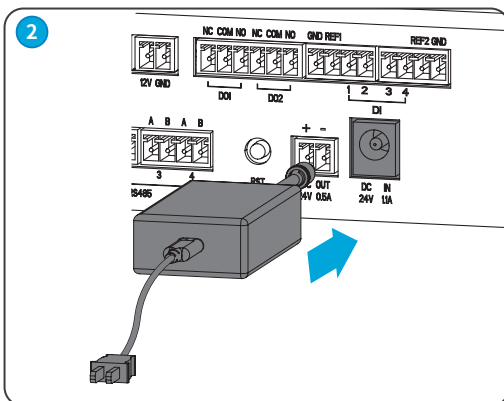
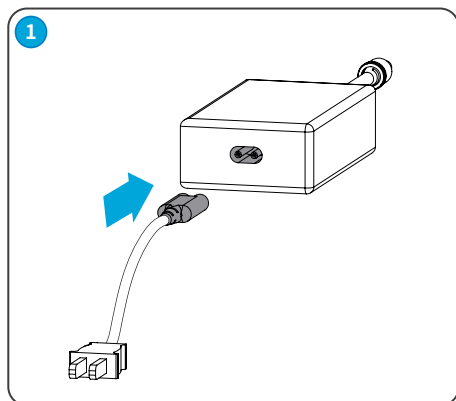
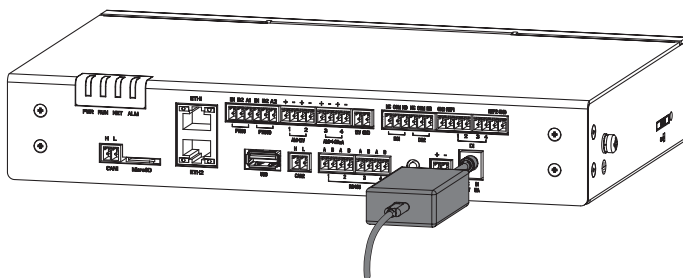
## MicroSD Card



## SIM Card (optional)

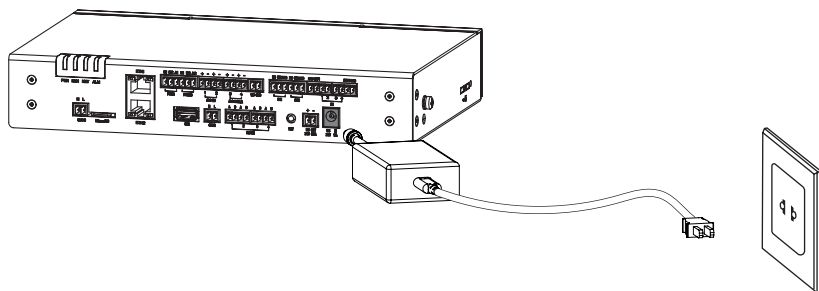


## Power Adapter





## 05 Power On and Off



### Power ON

Connect the power adapter cable to the device and the AC socket side. Turn on the switch on the AC socket side.

### Power OFF

Disconnect the power adapter from the device and AC socket.

## 06 Commissioning via WEB

For more detailed instructions about WEB commissioning, scan the QR codes below.




Ezlogger3000C User  
Manual



GoodWe Website

## **GoodWe Technologies Co.,Ltd.**

 No. 90 Zijin Rd., New District, Suzhou, 215011, China

 [www.goodwe.com](http://www.goodwe.com)

 [service@goodwe.com](mailto:service@goodwe.com)



340-01005-00



Local Contacts